

# Flute

## 星の世界

讃美歌  
水口 透 編曲

### <パート1>

Musical notation for Part 1, consisting of four staves. The first staff starts with a treble clef, a key signature of one flat (B-flat), and a common time signature (C). The melody begins with a quarter note G4, followed by an eighth note F4, and then a series of eighth notes: E4, D4, C4, B3, A3, G3, F3, E3. The second staff continues with a quarter note D3, a quarter rest, a quarter note C3, an eighth note B2, and eighth notes A2, G2, F2, E2. The third staff continues with a quarter note D2, a quarter rest, a quarter note C2, an eighth note B1, and eighth notes A1, G1, F1, E1. The fourth staff concludes with a quarter note D1, a quarter rest, a quarter note C1, an eighth note B0, and eighth notes A0, G0, F0, E0. The piece ends with a double bar line.

### <パート2>

Musical notation for Part 2, consisting of three staves. The first staff starts with a treble clef, a key signature of one flat (B-flat), and a common time signature (C). The melody begins with a quarter note G4, followed by an eighth note F4, and then a series of eighth notes: E4, D4, C4, B3, A3, G3, F3, E3. The second staff continues with a quarter note D3, a quarter rest, a quarter note C3, an eighth note B2, and eighth notes A2, G2, F2, E2. The third staff continues with a quarter note D2, a quarter rest, a quarter note C2, an eighth note B1, and eighth notes A1, G1, F1, E1. The fourth staff concludes with a quarter note D1, a quarter rest, a quarter note C1, an eighth note B0, and eighth notes A0, G0, F0, E0. The piece ends with a double bar line.

### <パート3>

Musical notation for Part 3, consisting of three staves. The first staff starts with a treble clef, a key signature of one flat (B-flat), and a common time signature (C). The melody begins with a quarter note G4, followed by an eighth note F4, and then a series of eighth notes: E4, D4, C4, B3, A3, G3, F3, E3. The second staff continues with a quarter note D3, a quarter rest, a quarter note C3, an eighth note B2, and eighth notes A2, G2, F2, E2. The third staff continues with a quarter note D2, a quarter rest, a quarter note C2, an eighth note B1, and eighth notes A1, G1, F1, E1. The fourth staff concludes with a quarter note D1, a quarter rest, a quarter note C1, an eighth note B0, and eighth notes A0, G0, F0, E0. The piece ends with a double bar line.

# B $\flat$ Clarinet

## 星の世界

讃美歌  
水口 透 編曲

### <パート1>

Musical notation for Part 1, measures 1-13. The key signature is one sharp (F#) and the time signature is common time (C). The notation consists of four staves of music.

### <パート2>

Musical notation for Part 2, measures 1-13. The key signature is one sharp (F#) and the time signature is common time (C). The notation consists of four staves of music.

### <パート3>

Musical notation for Part 3, measures 1-13. The key signature is one sharp (F#) and the time signature is common time (C). The notation consists of four staves of music.

# Bass Clarinet

## 星の世界

讃美歌  
水口 透 編曲

### <パート1>

Musical notation for Part 1, measures 1-11. The notation is written on a single staff in treble clef with a key signature of one sharp (F#) and a common time signature (C). The melody consists of eighth and quarter notes with rests.

### <パート2>

Musical notation for Part 2, measures 1-11. The notation is written on a single staff in treble clef with a key signature of one sharp (F#) and a common time signature (C). The melody consists of eighth and quarter notes with rests.

### <パート3>

Musical notation for Part 3, measures 1-11. The notation is written on a single staff in treble clef with a key signature of one sharp (F#) and a common time signature (C). The melody consists of eighth and quarter notes with rests.

### <パート4>

Musical notation for Part 4, measures 1-11. The notation is written on a single staff in treble clef with a key signature of one sharp (F#) and a common time signature (C). The melody consists of eighth and quarter notes with rests.

# E $\flat$ Alto Saxophone

## 星の世界

讃美歌  
水口 透 編曲

### <パート1>

Musical notation for Part 1, consisting of three staves. The first staff starts at measure 1 and ends at measure 4. The second staff starts at measure 5 and ends at measure 8. The third staff starts at measure 9 and ends at measure 12. The key signature is one sharp (F#) and the time signature is common time (C).

### <パート2>

Musical notation for Part 2, consisting of three staves. The first staff starts at measure 1 and ends at measure 4. The second staff starts at measure 5 and ends at measure 8. The third staff starts at measure 9 and ends at measure 12. The key signature is one sharp (F#) and the time signature is common time (C).

### <パート3>

Musical notation for Part 3, consisting of three staves. The first staff starts at measure 1 and ends at measure 4. The second staff starts at measure 5 and ends at measure 8. The third staff starts at measure 9 and ends at measure 12. The key signature is one sharp (F#) and the time signature is common time (C).

# B $\flat$ Tenor Saxophone

## 星の世界

讃美歌  
水口 透 編曲

### <パート1>

Musical notation for Part 1, consisting of four staves. The first staff starts with a treble clef, a key signature of one sharp (F#), and a common time signature (C). The melody begins with a dotted quarter note on G4, followed by an eighth note on A4, and then a quarter note on B4. The piece concludes with a double bar line at the end of the fourth staff.

### <パート2>

Musical notation for Part 2, consisting of three staves. The notation continues from Part 1, starting with a dotted quarter note on G4. The melody features a series of eighth notes and quarter notes, ending with a double bar line at the end of the third staff.

### <パート3>

Musical notation for Part 3, consisting of three staves. The notation continues from Part 2, starting with a dotted quarter note on G4. The melody features a series of eighth notes and quarter notes, ending with a double bar line at the end of the third staff.

# E $\flat$ Baritone Saxophone

## 星の世界

讃美歌  
水口 透 編曲

### <パート1>

Musical notation for Part 1, measures 1-13. The key signature is one sharp (F#) and the time signature is common time (C). The notation is written on a single staff in treble clef. The melody consists of eighth and quarter notes, with some rests. The piece ends with a double bar line at measure 13.

### <パート3>

Musical notation for Part 3, measures 1-13. The key signature is one sharp (F#) and the time signature is common time (C). The notation is written on a single staff in treble clef. The melody consists of eighth and quarter notes, with some rests. The piece ends with a double bar line at measure 13.

### <パート4>

Musical notation for Part 4, measures 1-13. The key signature is one sharp (F#) and the time signature is common time (C). The notation is written on a single staff in treble clef. The melody consists of eighth and quarter notes, with some rests. The piece ends with a double bar line at measure 13.

# B $\flat$ Trumpet

## 星の世界

讃美歌  
水口 透 編曲

### <パート1>

Musical notation for Part 1, consisting of four staves. The key signature is one sharp (F#) and the time signature is common time (C). The notation includes various note values such as quarter, eighth, and sixteenth notes, along with rests. The piece concludes with a double bar line.

### <パート2>

Musical notation for Part 2, consisting of three staves. The key signature is one sharp (F#) and the time signature is common time (C). The notation includes various note values such as quarter, eighth, and sixteenth notes, along with rests. The piece concludes with a double bar line.

### <パート3>

Musical notation for Part 3, consisting of four staves. The key signature is one sharp (F#) and the time signature is common time (C). The notation includes various note values such as quarter, eighth, and sixteenth notes, along with rests. The piece concludes with a double bar line.

# E $\flat$ Alto Horn

## 星の世界

讃美歌  
水口 透 編曲

### <パート1>

Musical notation for Part 1, consisting of three staves. The first staff starts at measure 1 and ends at measure 13. The second staff starts at measure 5 and ends at measure 13. The third staff starts at measure 9 and ends at measure 13. The key signature is one sharp (F#) and the time signature is common time (C).

### <パート2>

Musical notation for Part 2, consisting of three staves. The first staff starts at measure 1 and ends at measure 13. The second staff starts at measure 5 and ends at measure 13. The third staff starts at measure 9 and ends at measure 13. The key signature is one sharp (F#) and the time signature is common time (C).

### <パート3>

Musical notation for Part 3, consisting of three staves. The first staff starts at measure 1 and ends at measure 13. The second staff starts at measure 5 and ends at measure 13. The third staff starts at measure 9 and ends at measure 13. The key signature is one sharp (F#) and the time signature is common time (C).



# Horn in F

## 星の世界

讃美歌  
水口 透 編曲

### <パート1>

5

9

13

### <パート2>

5

9

13

### <パート3>

5

9

13

# Trombone

## 星の世界

讃美歌  
水口 透 編曲

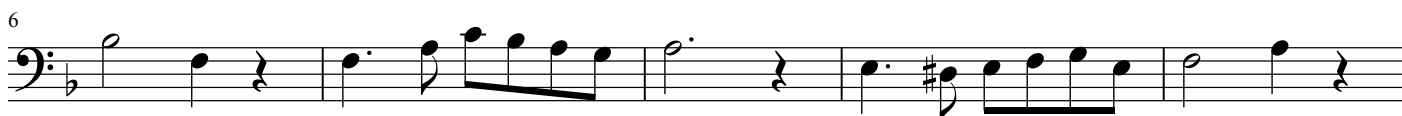
### <パート1>



### <パート2>



### <パート3>



### <パート4>



# Euphonium

## 星の世界

讃美歌  
水口 透 編曲

### <パート1>

Musical notation for Part 1, measures 1-11. The notation is in bass clef, 6/8 time signature, and B-flat major. It consists of three staves. The first staff contains measures 1-5. The second staff contains measures 6-10, with a measure rest at the beginning. The third staff contains measures 11-15, ending with a double bar line.

### <パート2>

Musical notation for Part 2, measures 1-11. The notation is in bass clef, 6/8 time signature, and B-flat major. It consists of three staves. The first staff contains measures 1-5. The second staff contains measures 6-10, with a measure rest at the beginning. The third staff contains measures 11-15, ending with a double bar line.

### <パート3>

Musical notation for Part 3, measures 1-11. The notation is in bass clef, 6/8 time signature, and B-flat major. It consists of three staves. The first staff contains measures 1-5. The second staff contains measures 6-10, with a measure rest at the beginning. The third staff contains measures 11-15, ending with a double bar line.

### <パート4>

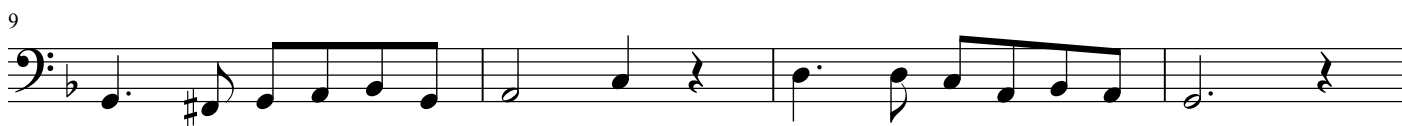
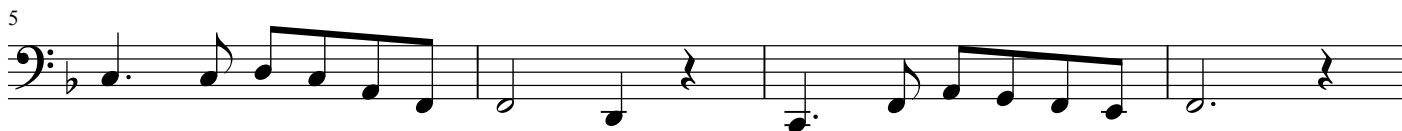
Musical notation for Part 4, measures 1-11. The notation is in bass clef, 6/8 time signature, and B-flat major. It consists of three staves. The first staff contains measures 1-5. The second staff contains measures 6-10, with a measure rest at the beginning. The third staff contains measures 11-15, ending with a double bar line.

# Tuba

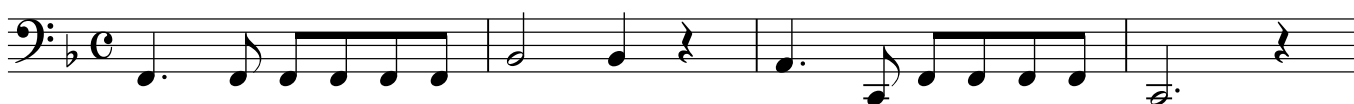
## 星の世界

讃美歌  
水口 透 編曲

### <パート1>



### <パート4>



# Mallet

## 星の世界

讃美歌  
水口 透 編曲

### <パート1>

Musical notation for Part 1, measures 1-13. The notation is in treble clef, 2/4 time, and B-flat major. It consists of three staves of music. The first staff contains measures 1-4, the second staff contains measures 5-8, and the third staff contains measures 9-13. The music features a mix of quarter, eighth, and sixteenth notes, with rests and a final double bar line at the end of measure 13.

### <パート2>

Musical notation for Part 2, measures 1-13. The notation is in treble clef, 2/4 time, and B-flat major. It consists of three staves of music. The first staff contains measures 1-4, the second staff contains measures 5-8, and the third staff contains measures 9-13. The music features a mix of quarter, eighth, and sixteenth notes, with rests and a final double bar line at the end of measure 13.

### <パート3>

Musical notation for Part 3, measures 1-13. The notation is in treble clef, 2/4 time, and B-flat major. It consists of three staves of music. The first staff contains measures 1-4, the second staff contains measures 5-8, and the third staff contains measures 9-13. The music features a mix of quarter, eighth, and sixteenth notes, with rests and a final double bar line at the end of measure 13.

Timpani  
(Option)

星の世界

讚美歌  
水口 透 編曲



Snare Drum  
Bass Drum  
(Option)

