

## VXS3S Revit Family

This operation manual will explain how to set VXS3S “Family” in a “Project”

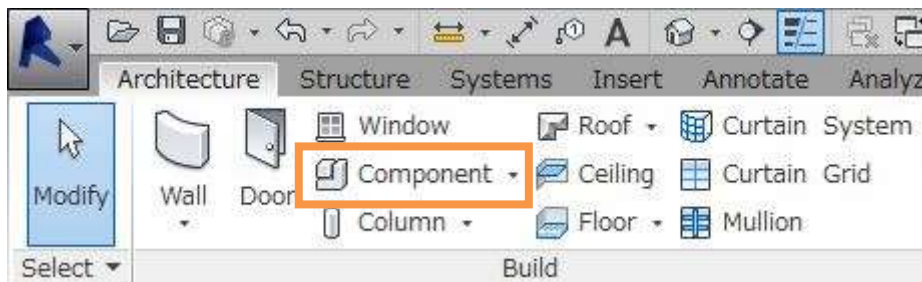
VXS3S has two types of family

VXS3S-wall.rfa is the family for surface mount and VXS3S-ceiling.rfa is the family for ceiling mount. Both “Family” are created by Revit 2016 version.

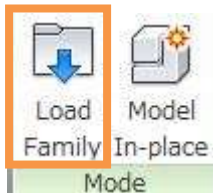
### To set family for surface mount (VXS3S-wall.rfa)

#### 1) Load “Family”

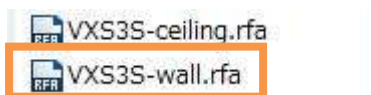
Click “Architecture”, then “Component”



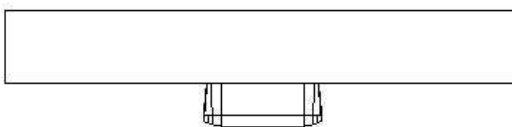
Click “Load Family” from the “Mode” Panel



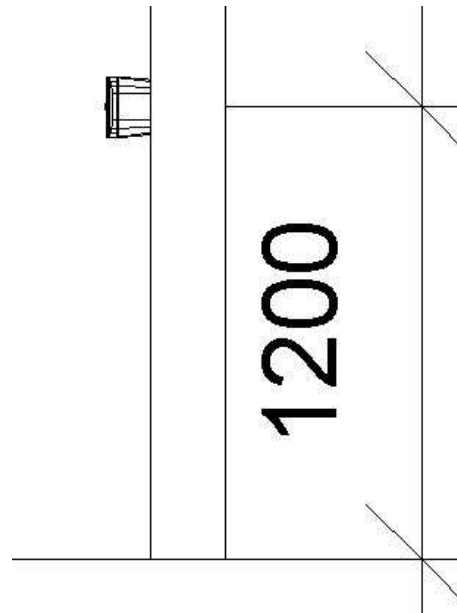
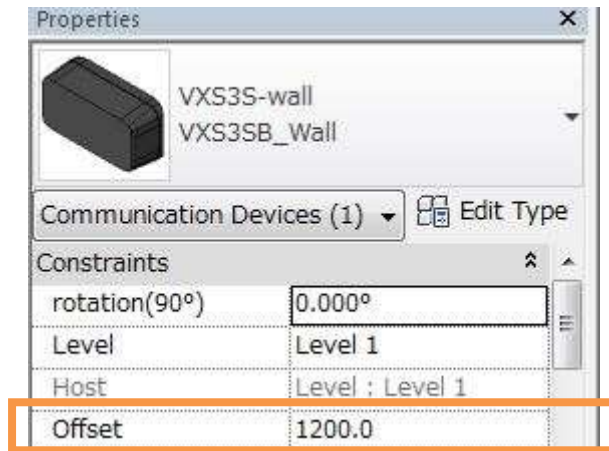
Select VXS3S-wall



#### 2) Click “Place on Work Plane” from the “Placement” panel



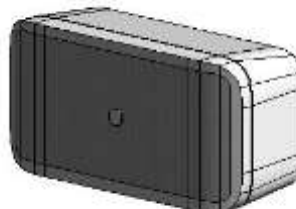
3) Input the “Offset” value in Properties to adjust the placement height



4) There are two types of “Family” for surface mount.  
Select the type of family from the “Type Selector

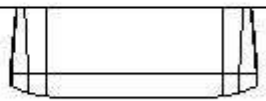
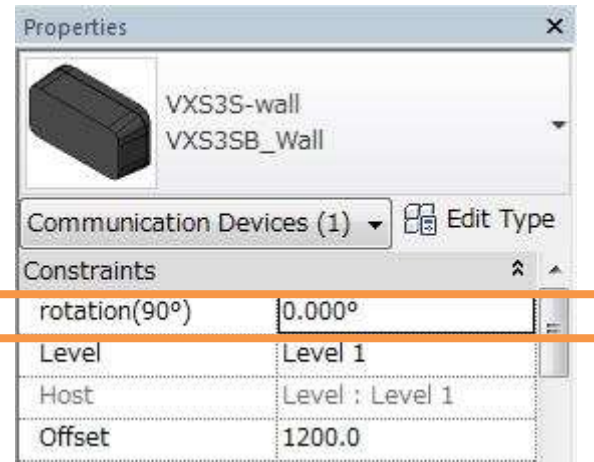


VXS3SB Wall

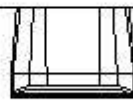


VXS3SW Wall

5) Input the rotation (90°) value in Properties to adjust the angle



rotation(90° )=0



rotation(90° )=90



6) For the specification of the speaker, check from the “Type properties”

Type Properties

Family: VXS3S-wall Load...

Type: VXS3SB\_Wall Duplicate... Rename...

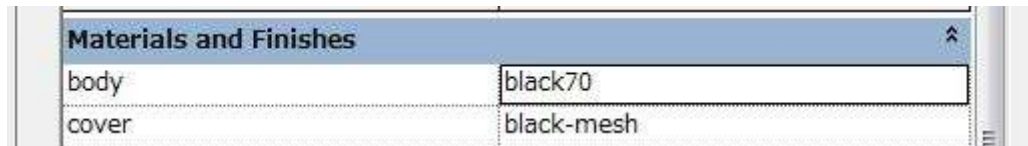
Type Parameters

Parameter	Value
<b>Dimensions</b>	
Width	322mm (12.7")
Height	162mm (6.4")
Depth	118mm (4.6")
<b>Identity Data</b>	
Manufacturer	Yamaha
Model	VXS3SB
IQ Category	Loudspeakers
Manufacturer URL	<a href="https://www.yamaha.com">https://www.yamaha.com</a>
Product Page URL	<a href="https://www.yamaha.com/proaudio/">https://www.yamaha.com/proaudio/</a>
Product Documentation Link	<a href="https://www.yamaha.com/proaudio/">https://www.yamaha.com/proaudio/</a>
A&E Specification	The subwoofer loudspeaker shall be

Other	
Sensitivity	79
Power Handling	40
SPL Max	98
Impedance	8
Coverage Horizontal	-
Coverage Vertical	-
70V Taps	15W, 7.5W, 3.8W, 1.9W
100V Taps	15W, 7.5W, 3.8W
Regulatory Compliance	-
Net Weight	2.7kg

\*Note!

The material shown in the “Material and Finishes” in “Type properties” are different to the material of the actual product.



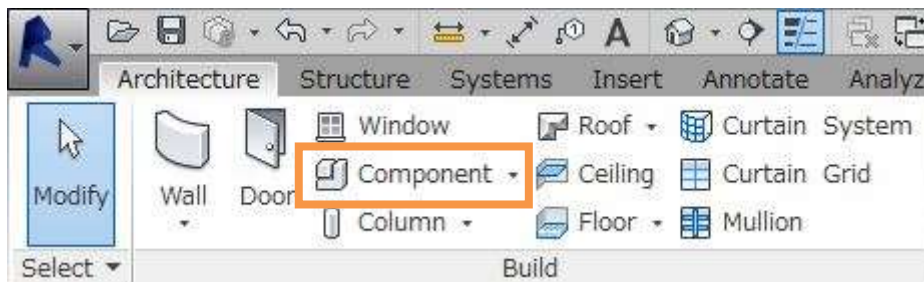
### To set family for VXS3S-ceiling.rfa

1) Load “Family”.

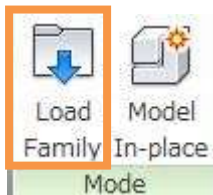
Note

The “Family” for ceiling cannot be placed without a ceiling.  
Please set the reflected ceiling plan

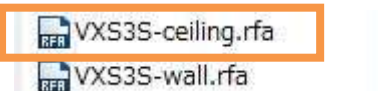
Click “Architecture”, then “Component”



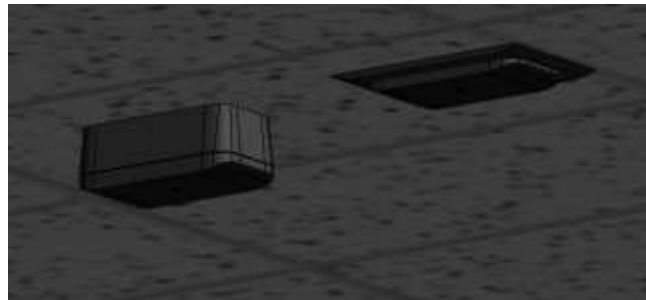
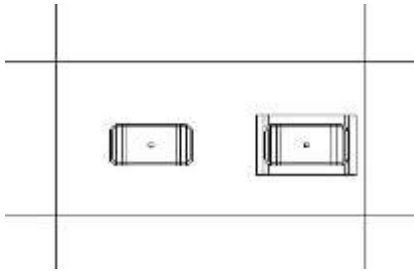
Click “Load Family” from the “Mode” Panel



Select VXS3S-ceiling



2) Place the VXS3S to the ceiling

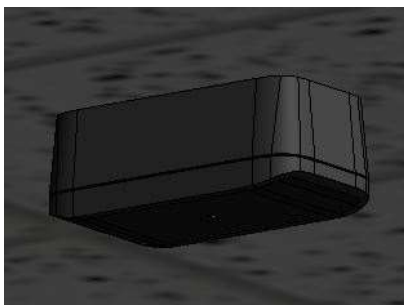
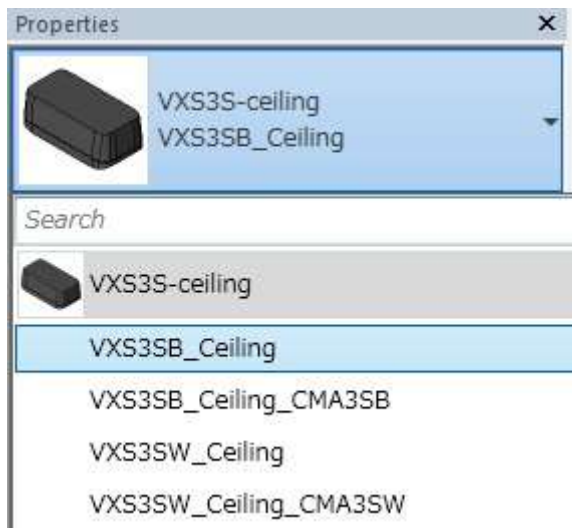


VXS3S

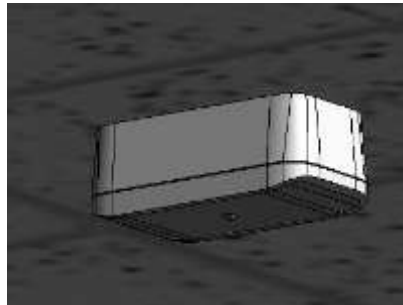
VXS3S\_CMA3SB

3) There are four types of “Family” for surface mount.

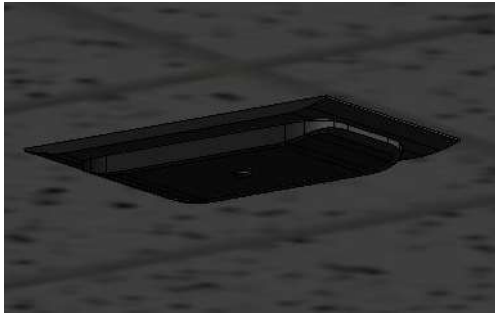
Select the type of family from the “Type Selector”



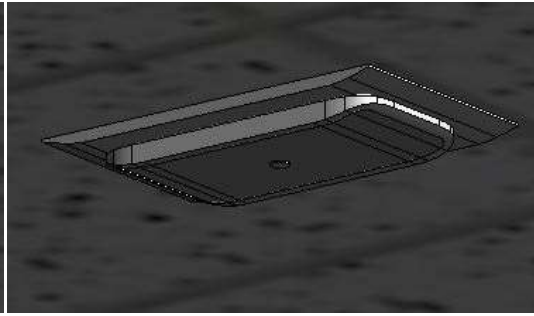
VXS3SB\_Ceiling



VXS3SW\_Ceiling

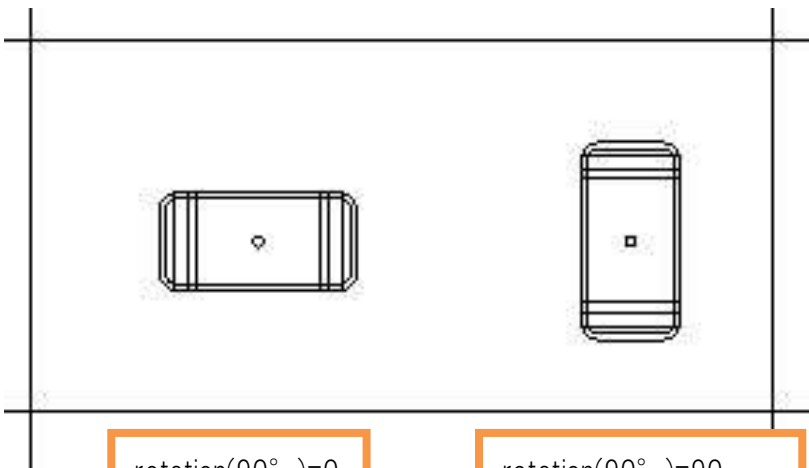
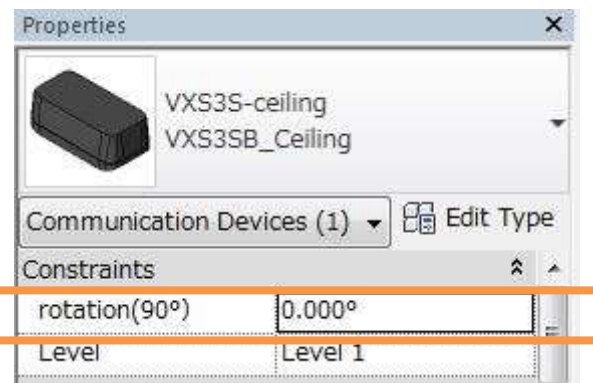


VXS3SB\_Ceiling\_CMA3SB



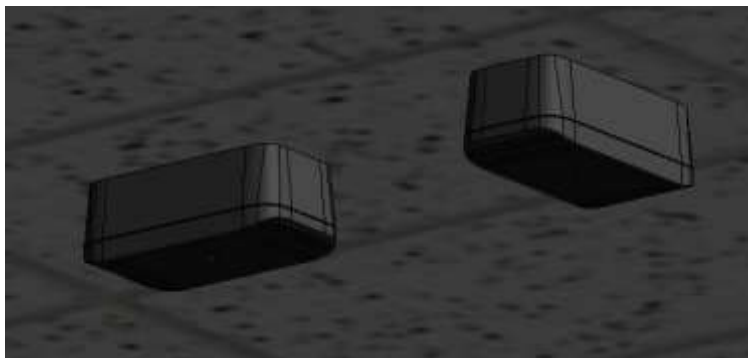
VXS3SW\_Ceiling\_CMA3SW

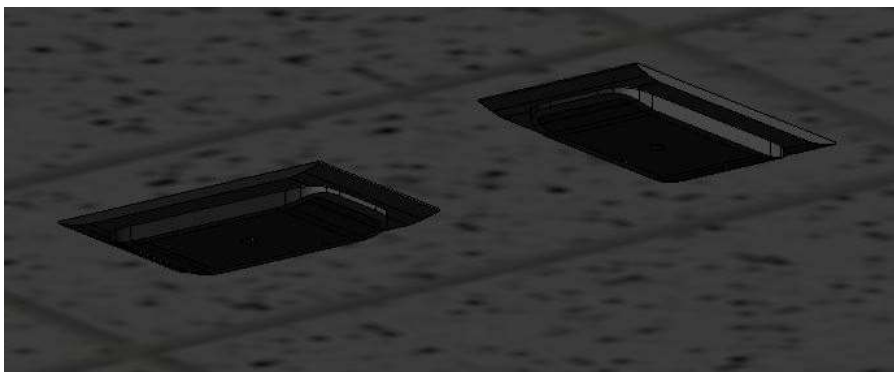
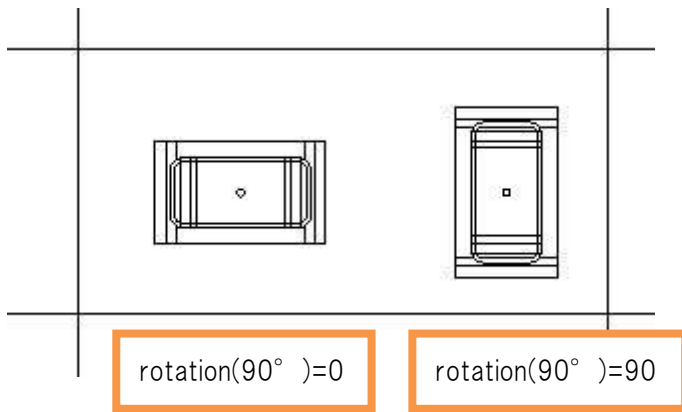
4) Input the rotation (90°) value in Properties to adjust the angle



rotation(90° )=0

rotation(90° )=90







5) For the specification of the speaker, check from the “Type properties

Type Properties

Family: VXS3S-ceiling Load...

Type: VXS3SB\_Ceiling Duplicate... Rename...

Type Parameters

Parameter	Value
<b>Dimensions</b>	
Width	322mm (12.7")
Height	162mm (6.4")
Depth	118mm (4.6")
<b>Identity Data</b>	
Manufacturer	Yamaha
Model	VXS3SB
IQ Category	Loudspeakers
Manufacturer URL	<a href="https://www.yamaha.com">https://www.yamaha.com</a>
Product Page URL	<a href="https://www.yamaha.com/proaudio/">https://www.yamaha.com/proaudio/</a>
Product Documentation Link	<a href="https://www.yamaha.com/proaudio/">https://www.yamaha.com/proaudio/</a>
A&E Specification	The subwoofer loudspeaker shall be
<b>Other</b>	
Sensitivity	79
Power Handling	40
SPL Max	98
Impedance	8
Coverage Horizontal	-
Coverage Vertical	-
70V Taps	15W, 7.5W, 3.8W, 1.9W
100V Taps	15W, 7.5W, 3.8W
Regulatory Compliance	-
Net Weight	2.7kg

\*Note!

The material shown in the “Material and Finishes” in “Type properties” are different to the material of the actual product.

The parameter value of “Constraints” is the parameter for the bracket to embed the speaker.  
Please do not change the value.

Constraints	
CMA3S	<input type="checkbox"/>
dis	0.0
Materials and Finishes	
body	black70
cma3s	black70
cover	black-mesh