

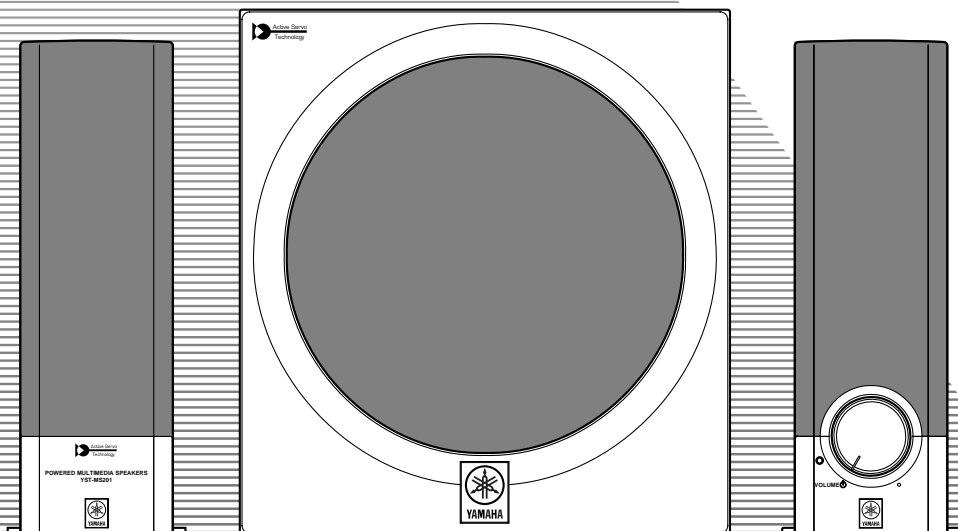


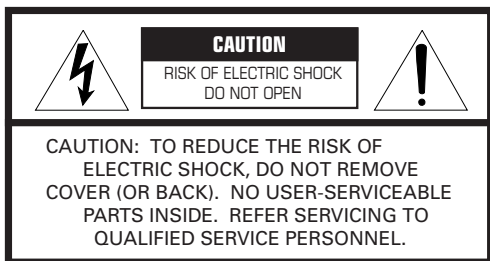
POWERED MULTIMEDIA SPEAKERS

# YST-MS201



OWNER'S MANUAL  
MODE D'EMPLOI





**IMPORTANT**  
Please record the serial number of this system in the space below.

Model:

Serial No.:

The serial number is located on the rear of the main unit.  
Retain this Owner's Manual in a safe place for future reference.

• Explanation of Graphical Symbols




The lightning flash with arrowhead symbol, within an equilateral triangle, is intended to alert you to the presence of uninsulated "dangerous voltage" within the product's enclosure that may be of sufficient magnitude to constitute a risk of electric shock to persons.



The exclamation point within an equilateral triangle is intended to alert you to the presence of important operating and maintenance (servicing) instructions in the literature accompanying the appliance.

**WARNING**  
TO REDUCE THE RISK OF FIRE OR ELECTRIC SHOCK, DO NOT EXPOSE THIS APPLIANCE TO RAIN OR MOISTURE.

# SAFETY INSTRUCTIONS

- 1 Read Instructions – All the safety and operating instructions should be read before the unit is operated.
- 2 Retain Instructions – The safety and operating instructions should be retained for future reference.
- 3 Heed Warnings – All warnings on the unit and in the operating instructions should be adhered to.
- 4 Follow Instructions – All operating and other instructions should be followed.
- 5 Water and Moisture – The unit should not be used near water – for example, near a bathtub, washbowl, kitchen sink, laundry tub, in a wet basement, or near a swimming pool, etc.
- 6 Carts and Stands – The unit should be used only with a cart or stand that is recommended by the manufacturer.
- 6A A unit and cart combination should be moved with care. Quick stops, excessive force, and uneven surfaces may cause the unit and cart combination to overturn. 
- 7 Wall or Ceiling Mounting – The unit should be mounted to a wall or ceiling only as recommended by the manufacturer.
- 8 Ventilation – The unit should be situated so that its location or position does not interfere with its proper ventilation. For example, the unit should not be situated on a bed, sofa, rug, or similar surface, that may block the ventilation openings; or placed in a built-in installation, such as a bookcase or cabinet that may impede the flow of air through the ventilation openings.
- 9 Heat – The unit should be situated away from heat sources such as radiators, stoves, or other appliances that produce heat.
- 10 Power Sources – The unit should be connected to a power supply only of the type described in the operating instructions or as marked on the unit.
- 11 Power-Cord Protection – Power-supply cords should be routed so that they are not likely to be walked on or pinched by items placed upon or against them, paying particular attention to cords at plugs, convenience receptacles, and the point where they exit from the unit.
- 12 Cleaning – The unit should be cleaned only as recommended by the manufacturer.
- 13 Nonuse Periods – The power cord of the unit should be unplugged from the outlet when left unused for a long period of time.
- 14 Object and Liquid Entry – Care should be taken so that objects do not fall into and liquids are not spilled into the inside of the unit.
- 15 Damage Requiring Service – The unit should be serviced by qualified service personnel when:
  - A. The power-supply cord or the plug has been damaged; or
  - B. Objects have fallen, or liquid has been spilled into the unit; or
  - C. The unit has been exposed to rain; or
  - D. The unit does not appear to operate normally or exhibits a marked change in performance; or
  - E. The unit has been dropped, or the cabinet damaged.
- 16 Servicing – The user should not attempt to service the unit beyond those means described in the operating instructions. All other servicing should be referred to qualified service personnel.
- 17 Power Lines – An outdoor antenna should be located away from power lines.
- 18 Grounding or Polarization – Precautions should be taken so that the grounding or polarization is not defeated.

## FCC INFORMATION (for US customers only)

**1. IMPORTANT NOTICE : DO NOT MODIFY THIS UNIT!**

This product, when installed as indicated in the instructions contained in this manual, meets FCC requirements. Modifications not expressly approved by Yamaha may void your authority, granted by the FCC, to use the product.

**2. IMPORTANT :** When connecting this product to accessories and/or another product use only high quality shielded cables. Cable/s supplied with this product **MUST** be used. Follow all installation instructions. Failure to follow instructions could void your FCC authorization to use this product in the USA.

**3. NOTE :** This product has been tested and found to comply with the requirements listed in FCC Regulations, Part 15 for Class "B" digital devices. Compliance with these requirements provides a reasonable level of assurance that your use of this product in a residential environment will not result in harmful interference with other electronic devices.

This equipment generates/uses radio frequencies and, if not installed and used according to the instructions found in the users manual, may cause interference harmful to the operation of other electronic devices.

Compliance with FCC regulations does not guarantee that interference will not occur in all installations. If this product is found to be the source of interference, which can be determined by turning the unit "OFF" and "ON", please try to eliminate the problem by using one of the following measures:

Relocate either this product or the device that is being affected by the interference.

Utilize power outlets that are on different branch (circuit breaker or fuse) circuits or install AC line filter/s.

In the case of radio or TV interference, relocate/reorient the antenna. If the antenna lead-in is 300 ohm ribbon lead, change the lead-in to coaxial type cable.

If these corrective measures do not produce satisfactory results, please contact the local retailer authorized to distribute this type of product. If you can not locate the appropriate retailer, please contact Yamaha Corporation of America 6600 Orangethorpe Ave. Buena Park, CA90622, U.S.A.

The above statements apply **ONLY** to those products distributed by Yamaha Corporation of America or its subsidiaries.

## We Want You Listening For A Lifetime

YAMAHA and the Electronic Industries Association's Consumer Electronics Group want you to get the most out of your equipment by playing it at a safe level. One that lets the sound come through loud and clear without annoying blaring or distortion – and, most importantly, without affecting your sensitive hearing.

Since hearing damage from loud sounds is often undetectable until it is too late, YAMAHA and the Electronic Industries Association's Consumer Electronics Group recommend you to avoid prolonged exposure from excessive volume levels.

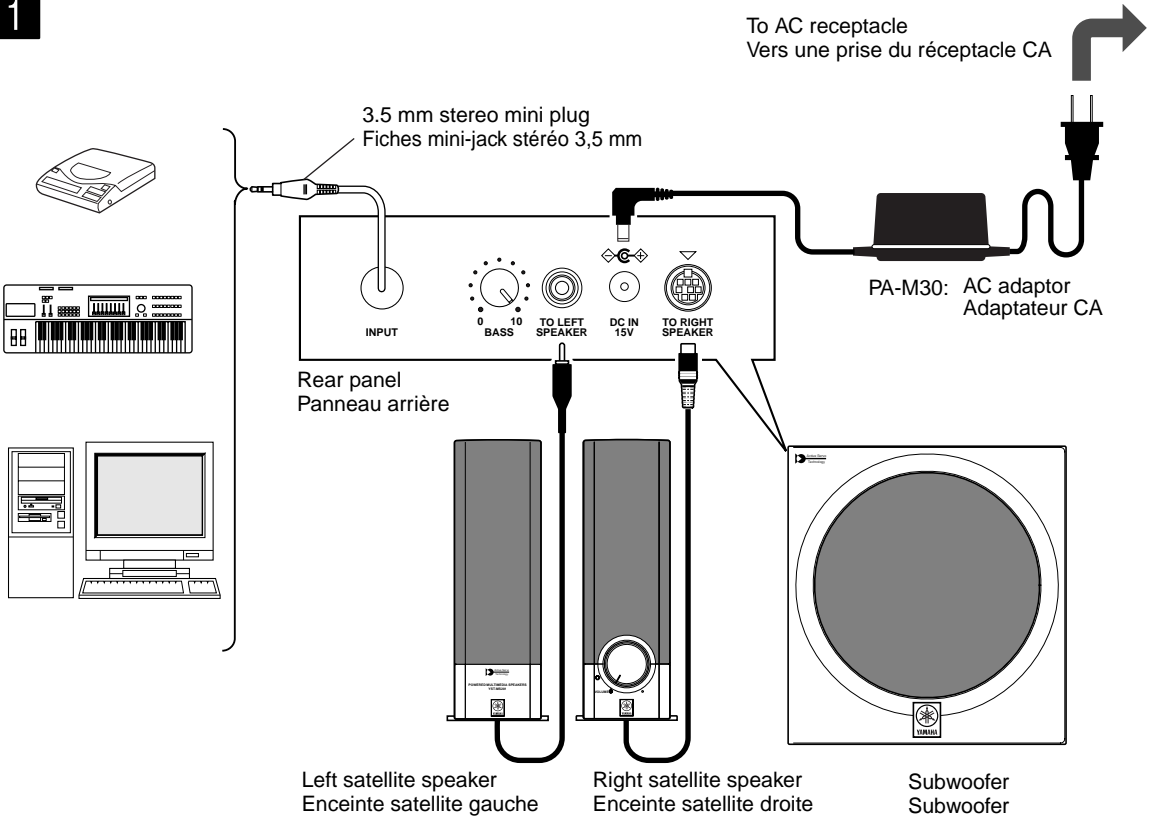


### For Canadian Customers

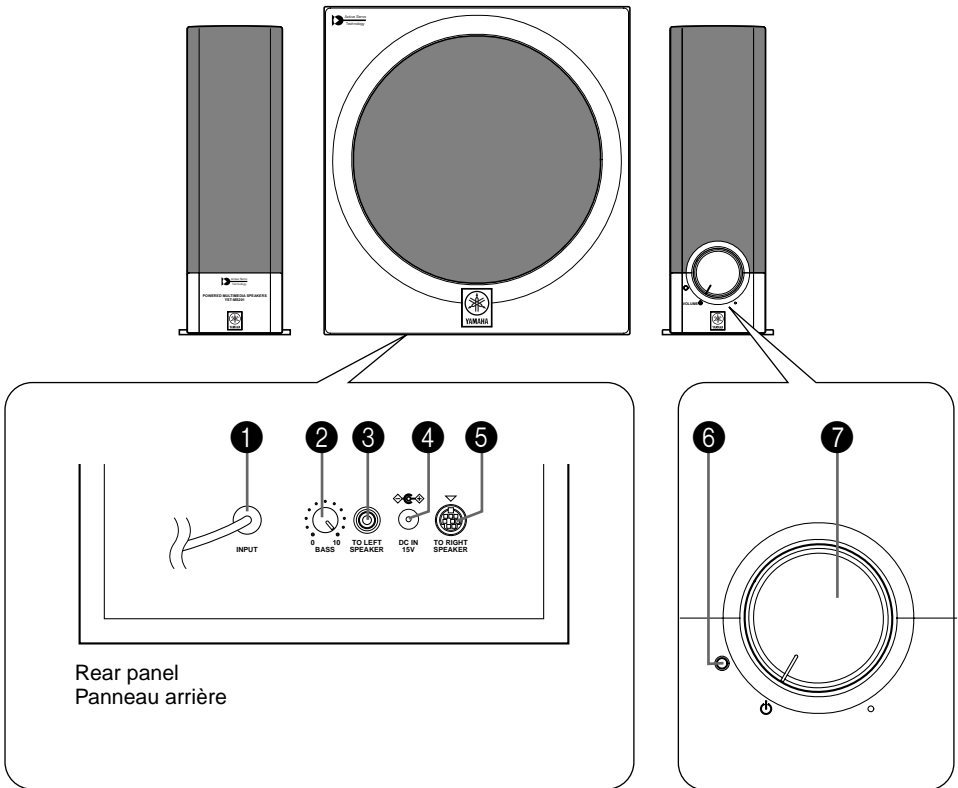
To prevent electric shock, match wide blade of plug to wide slot and fully insert.

This Class B digital apparatus complies with Canadian ICES-003.

1



2



Thank you for selecting Yamaha's YST-MS201 Powered Multimedia Speakers. Yamaha Active Servo Technology offers exceptionally high performance, allowing these compact speakers to produce a rich bass sound.

## CAUTIONS

Please read the following operating precautions before use. YAMAHA will not be held responsible for any damage and/or injury caused by not following the cautions below.

- When you disconnect the AC adaptor from the AC receptacle, hold the plug itself and not the cord.
- If you plan not to use YST-MS201 for a while, disconnect the AC adaptor from the AC receptacle.
- Always disconnect the AC adaptor from the AC receptacle before making any connections.
- YST-MS201 does not contain any user serviceable parts. Refer all servicing to your Yamaha dealer.
- **Never open the cabinet.** If a foreign object drops into the set, contact your dealer and stop using YST-MS201. Otherwise, you may cause a fire.
- Do not expose YST-MS201 to extreme temperatures, direct sunlight, excessive dust, humidity, or vibration.
- Position YST-MS201 on a level, stable surface. Do not drop, apply excessive force to their controls, or put heavy items on top of them.
- Do not place small metallic objects on YST-MS201. Otherwise, the object may fall, possibly causing an injury.
- Since the subwoofer has a built-in power amplifier, heat will radiate from the rear panel. Place the subwoofer apart from the walls, allowing a space of at least 20 cm (7-7/8") above, behind and on both sides of the subwoofer. Also, do not position with the rear panel facing down on the floor or other surfaces.
- Do not cover the rear panel of the subwoofer with a newspaper, a tablecloth, a curtain, etc. in order not to obstruct heat radiation. If the temperature inside the subwoofer rises, it may cause fire, damage to the subwoofer and/or personal injury.
- Do not place the following objects on YST-MS201:  
Glass, china, etc.  
If glass etc. falls by vibrations and breaks, it may cause personal injury.  
A burning candle etc.  
If the candle falls by vibrations, it may cause fire and personal injury.  
A vessel with water in it  
If the vessel falls by vibrations and water spills, it may cause damage to YST-MS201, and/or you may get an electric shock.
- To protect YST-MS201, avoid microphone feedback, continuous and excessive output from electronic musical instruments, and excessive signal distortion.
- If YST-MS201 is located close to fluorescent or neon lights, a slight hum may be heard. In this case, relocate YST-MS201 away from the light.
- Although YST-MS201 is magnetically shielded, keep floppy disks and tapes away from it.
- Avoid sources of hum (transformers, motors). To prevent fire or electrical shock, do not expose to rain or water.
- Do not use force on switches, knobs, or cables. When you move YST-MS201, first turn off the power, then disconnect the AC adaptor from the AC receptacle and the cables from the connected devices.

- Always set the POWER/VOLUME control fully to the left (in the standby mode) before starting to play the audio source: turn the control gradually after the play has started.
- **Be sure to use the AC adaptor (PA-M30) supplied with YST-MS201. Otherwise, you might cause a fire or damage to YST-MS201.**

### Standby mode

When YST-MS201 is turned off by rotating the POWER/VOLUME control, YST-MS201 consumes a small amount of power. This state is called the standby mode. The power supply is completely cut off from the AC line only when the AC adaptor is disconnected.

YST-MS201 features a magnetically shielded design, but there is still a chance that placing it too close to a TV or a computer monitor might impair picture color. Should this happen, move YST-MS201 away from the TV or the computer monitor.

### For U.K. customers

If the socket outlets in the home are not suitable for the plug supplied with this appliance, it should be cut off and an appropriate 3 pin plug fitted. For details, refer to the instructions described below.

**Note:** The plug severed from the mains lead must be destroyed, as a plug with bared flexible cord is hazardous if engaged in a live socket outlet.

### SPECIAL INSTRUCTIONS FOR U.K. MODEL

#### IMPORTANT:

THE WIRES IN MAINS LEAD ARE COLOURED IN ACCORDANCE WITH THE FOLLOWING CODE:

Blue: NEUTRAL  
Brown: LIVE

As the colours of the wires in the mains lead of this apparatus may not correspond with the coloured markings identifying the terminals in your plug, proceed as follows: The wire which is coloured BLUE must be connected to the terminal which is marked with the letter N or coloured BLACK. The wire which is coloured BROWN must be connected to the terminal which is marked with the letter L or coloured RED. Making sure that neither core is connected to the earth terminal of the three pin plug.

## CONNECTIONS

(See figure **1** on page **IV**.)

Make connections between the subwoofer, the satellite speakers and other equipment as shown in the figure.

**Caution: Plug in the subwoofer and other equipment after all connections are completed.**

## CONTROLS & CONNECTORS

(See figure 2 on page IV.)

### 1 INPUT

Connect this 3.5 mm mini plug connector cable to the output terminal of a CD player, a personal computer, etc. which input an audio source to YST-MS201.

### 2 BASS control

Allows you to adjust the output level of low range sound from the subwoofer.

A typical (recommended) setting is the position between one o'clock and two o'clock.

Rotate the control clockwise to increase the level and counterclockwise to decrease the level.

### 3 TO LEFT SPEAKER

Connect the RCA pin plug cable from the left satellite speaker to this connector.

### 4 DC IN connector

Connect the supplied AC adaptor to this connector.

### 5 TO RIGHT SPEAKER

Connect the 8-pin cable from the right satellite speaker to this connector.

### 6 Power indicator

Lights up when the power of YST-MS201 is on.

### 7 POWER/VOLUME control

Slowly turn the control clockwise. When it clicks, the power of YST-MS201 turns on and the power indicator (6) lights up.

Turn the control clockwise furthermore to increase the volume level of the entire speaker system and counterclockwise to decrease the level.

To turn YST-MS201 into the standby mode, turn the control fully counterclockwise until it clicks. The power indicator (6) will also go off.

## SPECIFICATIONS

Type ..... Yamaha Active Servo Technology

### Driver

Satellite ..... 8.5 (3-3/8") × 4.5 cm (1-3/4") cone, magnetically shielded type

Subwoofer

..... 12 cm (4-3/4") cone, magnetically shielded type

### Amplifier Output

Satellite ..... 6 W + 6 W (1 kHz, 4Ω at T.H.D.=10%)

Subwoofer ..... 18 W (100 Hz, 4Ω at T.H.D.=10%)

Input sensitivity ..... 200 mV (1 kHz, 4Ω at 6 W)

Input impedance ..... 20 kΩ

Frequency response ..... 45 Hz to 20 kHz  
(Satellite + Subwoofer)

### Power supply (AC adaptor)

U.S.A. and Canada models ..... AC 120 V, 60 Hz

U.K. and Europe models ..... AC 230 V, 50 Hz

Australia model ..... AC 240 V, 50 Hz

### Dimensions (W X H X D)

Satellite speakers

..... 70 (2-3/4") × 195 (7-11/16") × 145 (5-11/16") mm

Subwoofer

..... 193 (7-5/8") × 207 (8-1/8") × 214 (8-7/16") mm

### Weight

Satellite speakers ..... Right: 0.6 kg (1.3 lbs.)

Left: 0.5 kg (1.1 lbs.)

Subwoofer ..... 2.8 kg (6.2 lbs.)

Accessory ..... AC adaptor (PA-M30) × 1

\* Specifications are subject to change without notice.

## TROUBLESHOOTING

Refer to the chart below when the speakers do not function properly. If the problem you are experiencing is not listed below or if the instructions given below do not help, disconnect the AC adaptor and contact your authorized YAMAHA dealer or service center.

Problem	Cause	What to Do
<b>No sound comes from the speakers or subwoofer.</b>	The AC adaptor is not properly plugged into the AC receptacle.	Insert the AC adaptor firmly into the AC receptacle.
	The POWER/VOLUME control is set to off.	Turn on the power by turning the POWER/VOLUME control clockwise. (The power indicator lights up.)
	Connections are faulty or incomplete.	Make the connections again.
	The volume setting is low.	Turn the POWER/VOLUME control clockwise to increase the volume.
	The level of the signal being inputted is too low.	Turn up the volume on the connected component.
<b>The bass sound cannot be heard.</b>	The BASS control is set to minimum.	Turn the subwoofer BASS control clockwise to increase the volume.
<b>Sound is distorted.</b>	The level of the signal being inputted is too high.	Turn down the volume on the connected component.
<b>Noise.</b>	Connections are faulty or incomplete.	Make the connections again.



---

YAMAHA ELECTRONICS CORPORATION, USA 6660 ORANGETHORPE AVE., BUENA PARK, CALIF. 90620, U.S.A.  
YAMAHA CANADA MUSIC LTD. 135 MILNER AVE., SCARBOROUGH, ONTARIO M1S 3R1, CANADA  
YAMAHA ELECTRONIK EUROPA G.m.b.H. SIEMENSSTR, 22-34, 25462 RELLINGEN, BEI HAMBURG, F.R. OF GERMANY  
YAMAHA ELECTRONIQUE FRANCE S.A. RUE AMBROISE CROIZAT BP70 CROISSY-BEAUBOURG 77312 MARNE-LA-VALLEE CEDEX02, FRANCE  
YAMAHA ELECTRONICS (UK) LTD. YAMAHA HOUSE, 200 RICKMANSWORTH ROAD WATFORD, HERTS WD1 7JS, ENGLAND  
YAMAHA SCANDINAVIA A.B. J A WETTERGRENS GATA 1, BOX 30053, 400 43 VASTRA FRÖLUNDA, SWEDEN  
YAMAHA MUSIC AUSTRALIA PTY, LTD. 17-33 MARKET ST., SOUTH MELBOURNE, 3205 VIC., AUSTRALIA

YAMAHA CORPORATION

Printed in China



V664810