



# **MD-BT01**

---

Wireless MIDI Adaptor

**Owner's Manual**

# PRECAUTIONS

## PLEASE READ CAREFULLY BEFORE PROCEEDING

Please keep this manual in a safe and handy place for future reference.



### WARNING

Always follow the basic precautions listed below to avoid the possibility of serious injury or even death from electrical shock, short-circuiting, damages, fire or other hazards. These precautions include, but are not limited to, the following:

#### Do not open

- This product contains no user-serviceable parts. Do not open the product or attempt to disassemble or modify the internal components in any way. If it should appear to be malfunctioning, discontinue use immediately and have it inspected by qualified Yamaha service personnel.

#### Location

- Radio waves may affect electro-medical devices.
  - Do not use this product near medical devices or inside medical facilities.
  - Do not bring this product within 15 cm (6 in.) of anyone having a heart pacemaker or defibrillator implant.Radio waves emanating from this product or magnetism emanating from internal magnets of this product may adversely affect a heart pacemaker implant or defibrillator implant.

#### Water warning

- Do not expose the product to rain, use it near water or in damp or wet conditions, or place on it any containers (such as vases, bottles or glasses) containing liquids which might spill into any openings. If any liquid such as water seeps into the product, turn off the power of the instrument immediately and unplug the power cord from the AC outlet. Then have the product inspected by qualified Yamaha service personnel.

#### If you notice any abnormality

- If any of the following problems occur, immediately turn off the power switch of the instrument and disconnect the electric plug from the outlet.
  - It emits unusual smells or smoke.

Yamaha cannot be held responsible for damage caused by improper use or modifications to the instrument, or data that is lost or destroyed.

DMI-5

### NOTICE


To avoid the possibility of malfunction/ damage to the product, damage to data, or damage to other property, follow the notices below.

#### ■ Handling

- Do not use this product in the vicinity of a TV, radio, stereo equipment, or other electric devices. Otherwise, this product, TV, or radio may generate noise. When you use this product along with an application on your iPad, iPhone or iPod touch, we recommend that you set "Airplane Mode" to "ON" on that device in order to avoid noise caused by communication.
- Do not expose this product to excessive dust or vibrations, or extreme cold or heat (such as in direct sunlight, near a heater, or in a car during the day) to prevent the possibility of panel disfiguration, damage to the internal components or unstable operation.
- Do not connect this product to anything other than a MIDI terminal.
- Follow local regulations and ordinances when disposing of this product.
- When in use, this product may malfunction, significantly decrease in performance, or even stop working due to nearby radio waves of the same frequency or of a cellular phone.

### Information

#### ■ About this manual

- The illustrations as shown in this manual are for instructional purposes only, and may appear somewhat different from those on your instrument.
-  **Bluetooth®**  
The Bluetooth® word mark and logos are registered trademarks owned by Bluetooth SIG, Inc. and any use of such marks by Yamaha Corporation is under license.
- Mac, OS X, iPhone, iPad and iPod touch are trademarks of Apple Inc., registered in the U.S. and other countries.
- The company names and product names in this manual are the trademarks or registered trademarks of their respective companies.

By using this product, you can enable wireless communication of the MIDI data between Yamaha products that are compatible with this product and your smart device, such as an iPhone, iPad and iPod touch. For details about compatible Yamaha products, applications and devices, access the website below, enter “MD-BT01” (for example) to the Model Name box, then click [SEARCH].

\* In this manual, iPhone and iPod touch are hereafter collectively called iPhone.

**NOTE**

The latest firmware can be downloaded from the website below:

YAMAHA Downloads <http://download.yamaha.com/>

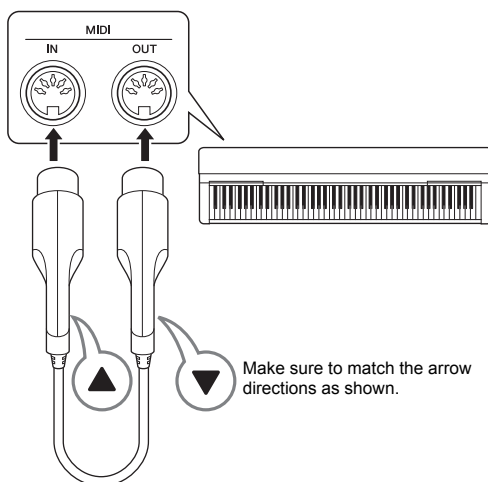
**Connection procedure**

Making a wireless connection between a musical instrument and an iPhone/iPad using the MD-BT01.

- 1 Make sure that the power to the connected musical instrument is turned off.  
Quit any open application software on your iPhone/iPad.
- 2 As shown in the figure, connect the MD-BT01 to the MIDI terminals of the musical instrument.

**NOTICE**

When disconnecting this product from a musical instrument, please pull out a main unit of the product without having the cord. Otherwise the cord could be caused damage or resulted in a malfunction.



- 3 Turn on the instrument.  
The lamp of the MD-BT01 flashes.
- 4 Tap the setting icon of iPhone/iPad, and then turn on “Bluetooth.”
- 5 Start the iPhone/iPad compatible application, and then make the appropriate wireless connection settings.  
If the wireless connection is successful, the lamp on the MD-BT01 lights continuously.

**Specifications**

Color	Black
Size	17 mm (W) x 17 mm (H) x 67 mm (D) (includes connector portion)
Weight	23 g
Indicator	LED x 2
Bluetooth standards	Bluetooth (Ver. 4.0; GATT compatible) Bluetooth Low Energy MIDI Specification -compliant
Range of transmit frequency	2402–2480 MHz
Maximum RF output power	4 dBm
Connector	MIDI x 2 (IN, OUT)
Power	MIDI OUT
Power Consumption	26 mW
Supported OS	iOS 8 or later OS X Yosemite or later
Hardware requirements	Mac, iPhone/iPod touch/iPad with Bluetooth 4.0 installed

\* The contents of this manual apply to the latest specifications as of the publishing date. To obtain the latest manual, access the Yamaha website then download the manual file. Since specifications, equipment or separately sold accessories may not be the same in every locale, please check with your Yamaha dealer.

### Information for users on collection and disposal of old equipment:



This symbol on the products, packaging, and/or accompanying documents means that used electrical and electronic products should not be mixed with general household waste. For proper treatment, recovery and recycling of old products, please take them to applicable collection points, in accordance with your national legislation.

By disposing of these products correctly, you will help to save valuable resources and prevent any potential negative effects on human health and the environment which could otherwise arise from inappropriate waste handling.

For more information about collection and recycling of old products, please contact your local municipality, your waste disposal service or the point of sale where you purchased the items.

#### **For business users in the European Union:**

If you wish to discard electrical and electronic equipment, please contact your dealer or supplier for further information.

#### **Information on Disposal in other Countries outside the European Union:**

This symbol is only valid in the European Union. If you wish to discard these items, please contact your local authorities or dealer and ask for the correct method of disposal.

(weee\_eu\_en\_02)