



# reface CS reface DX

## V1.20 Updater Guide

EN

**Thank you for choosing a reface series product.**

**This Updater Guide describes how to update your reface CS or reface DX to version 1.20 and the update's main enhancements.**

**Please read this document carefully before updating your reface.**

### ■ Notes

- This updater is designed for use with the reface CS and reface DX only.
- This updater is to be used at the user's own risk.
- A computer running one of the following operating systems is required for this update:  
Microsoft Windows 7 (32-bit or 64-bit); Windows 8.1 (32-bit or 64-bit)  
or  
Mac OSX 10.9; Mac OSX 10.10
- The update will take approximately five minutes. Please ensure that your computer does not enter Sleep mode during this time.
- During the update, do not launch or operate any applications other than the updater on your computer.
- During the update, be sure to power the reface by using its AC power adaptor.
- If your reface should fail to function as a result of the supply of power being interrupted or incorrect operation during the update, repeating the update procedure from the beginning may not resolve the problem.
- If your reface fails to function after repeating the update procedure from the beginning, please contact your nearest Yamaha service center.

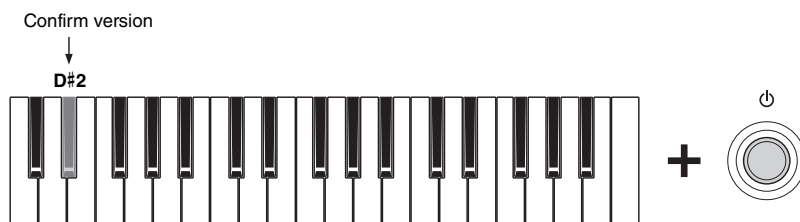
### ■ Applicable models

reface CS and reface DX, earlier than version 1.20

# Confirming the Current Version

## ● reface CS

### Operation



While holding down the D#2 key, press the [⏻] (Standby/On) switch.

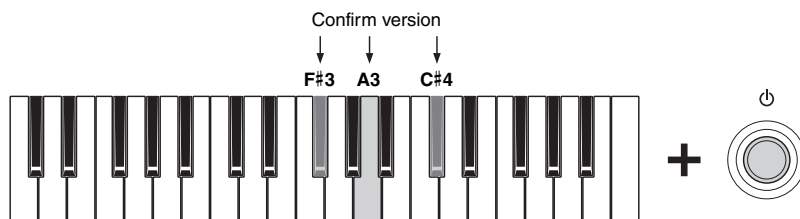
### Confirm



If the [W] (Frequency Modulation) and the [D] (Ring Modulation) lamps from the OSC (Oscillator) section light up or flash, your reface version is already 1.20 or later. Therefore, you do not need to use this updater. If the lamps neither light up nor flash, proceed with updating as described in [“Updating Procedure”](#).

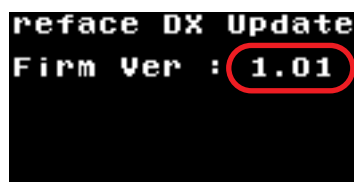
## ● reface DX

### Operation



While holding down the F#3, A3, and C#4 keys, press the [⏻] (Standby/On) switch.

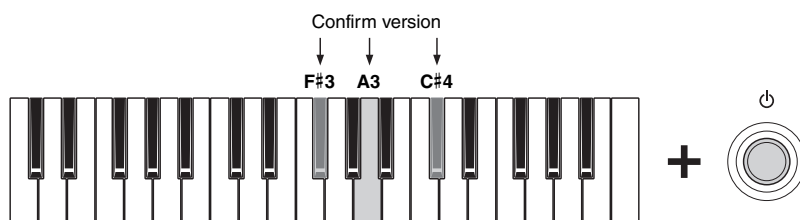
### Confirm



If the version shown on the display is 1.20 or later, you do not need to use this updater. If the version shown is earlier than 1.20, proceed with updating as described in [“Updating Procedure”](#).

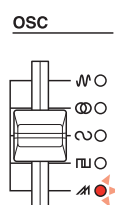
# Updating Procedure


1. Press the [⏻] (Standby/On) switch and turn off the reface.  
Ensure that the AC power adaptor is connected to the reface.
2. Connect your reface to the computer by using a USB cable.
3. While holding down the F#3, A3, and C#4 keys, press the [⏻] (Standby/On) switch and turn the reface back on.



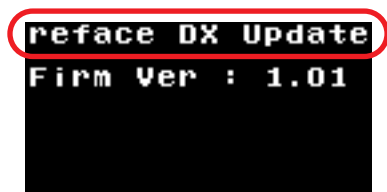
4. Confirm that the reface starts up in Update mode.

## ● reface CS



The [  ] (Multi-saw) lamp from the OSC (Oscillator) section lights up.

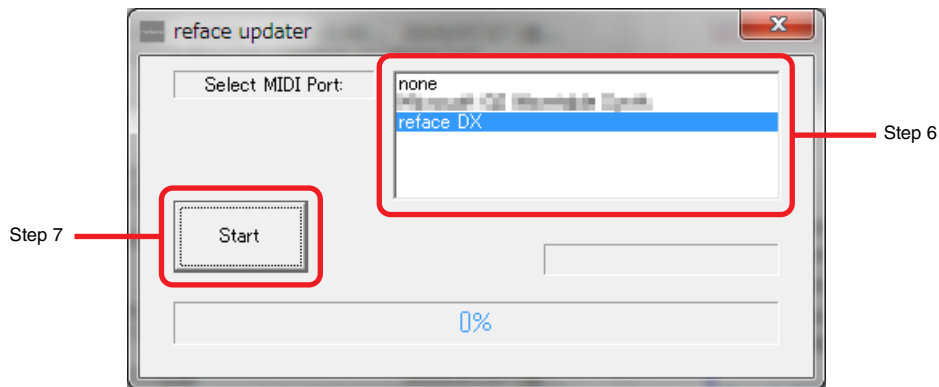
## ● reface DX



The message “reface DX Update” is shown on the display.

5. Launch the “reface updater” application on your computer.

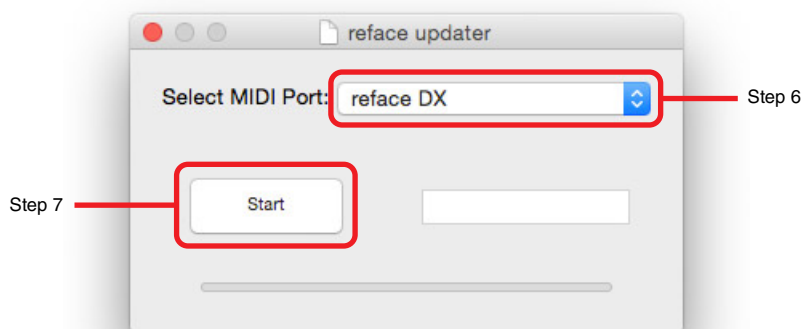
### ● Windows



#### NOTICE

The application's progress bar shows how much data has been transferred. The update process will continue for a certain time after the transfer has finished. Be sure to confirm completion of the update process on the reface itself.

### ● Mac



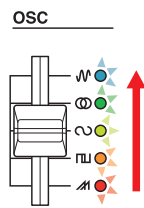
#### NOTICE

The application's progress bar shows how much data has been transferred. The update process will continue for a certain time after the transfer has finished. Be sure to confirm completion of the update process on the reface itself.

6. Set “MIDI Port” on the application to “reface”.

7. Click the [Start] button on the application.  
Confirm that the update has started based on the following display.

● **reface CS**



As the update progresses, the OSC (Oscillator) lamps light up successively from bottom to top.

● **reface DX**

```
reface DX Update
Firm Ver : 1.01
LOADING...
DON'T SHUTDOWN !
**----- 28%
```



```
reface DX Update
Firm Ver : 1.01
ERASING...
DON'T SHUTDOWN !
***----- 45%
```



```
reface DX Update
Firm Ver : 1.01
WRITING...
DON'T SHUTDOWN !
***----- 48%
```

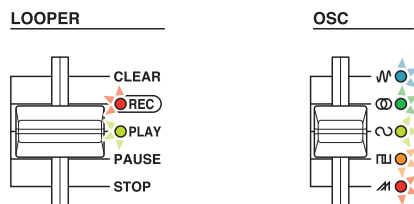


```
reface DX Update
Completed.
1.01 --> 1.20
Reboot.
```

As the update progresses, the display successively shows the messages “LOADING”, “ERASING”, WRITING”, and “Completed”.

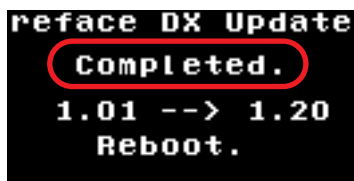
8. Confirm that the reface indicates the update as being complete.

### ● reface CS



All of the lamps from the OSC (Oscillator) section and the LOOPER section's REC and PLAY lamps light up.

### ● reface DX



The message “Completed” is shown on the display.

9. Shut down the updater application on the computer.
10. Restart your reface as described in [“Confirming the Current Version”](#) and confirm that it has been updated to version 1.20.

**This completes the update process.**

## Main Enhancements

### [V1.01 → V1.20]

#### Additional features and specifications changes

##### reface CS

- The pitch bend range can now be switched between “12” (1 octave) and “2” (2 semitones).
- The LOOPER can now quantize at either sixteenth notes or eighth-note triplets.

##### reface DX

- The LOOPER can now quantize at either sixteenth notes or eighth-note triplets.

Copyright© 2015 Yamaha Corporation. All Rights Reserved.

Manual Development Department  
© 2015 Yamaha Corporation

Published 08/2015 PO-A0