

ステップ4 <タイのリズム>

※ ステップ4の主な内容

- ・ B \flat Major の音階とハーモニー
- ・ タイのリズム
- ・ 付点2分音符のリズム

○スネアドラムは16分音符の1つ打ち

1. 音階とハーモニーの練習

Trumpet in B \flat

(調号に注意しましょう)

Alto Horn in E \flat

(調号に注意しましょう)

Trombone

(調号に注意しましょう)

Euphonium

(調号に注意しましょう)

E \flat Tuba
B \flat Tuba

Snare Drum

Sus. Cymbal
Bass Drum

(調号に注意しましょう)

Mallets

※ いくつかのパートに分かれる課題があります。
各パートを練習しましょう。

B \flat Trp.

E \flat A.Hrn.

Trb.

Euph.

E \flat Tuba
B \flat Tuba

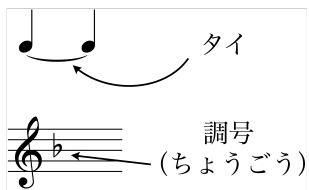
S.D.

S.Cym.
B.D.

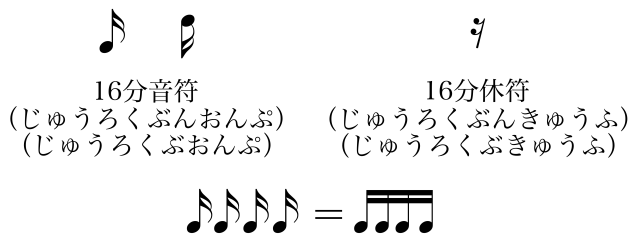
Mal.

楽ふのおはなし

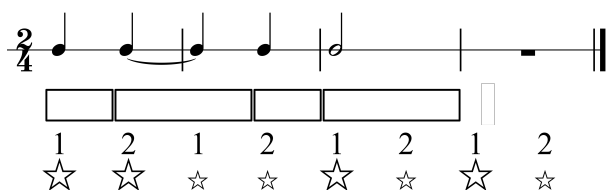
全パート



パーカッション



2. タイのリズム



3. タイの練習

T.M.

Trumpet in B \flat

Alto Horn in E \flat

Trombone Euphonium

E \flat Tuba B \flat Tuba

Snare Drum

Sus. Cymbal Bass Drum

Mallets

B \flat Trp.

E \flat A.Hrn.

Trb. Euph.

E \flat Tuba B \flat Tuba

S.D.

S.Cym. B.D.

Mal.

4. 5 番と くらべてみよう

T.M.

Trumpet in B \flat

Alto Horn in E \flat

Trombone Euphonium

E \flat Tuba B \flat Tuba

Snare Drum

Sus. Cymbal Bass Drum

Mallets

5. 4 番と くらべてみよう

Trumpet in B \flat

Alto Horn in E \flat

Trombone Euphonium

E \flat Tuba B \flat Tuba

Snare Drum

Sus. Cymbal Bass Drum

Mallets

6. 音ぶの足し算

☆ ☆ ☆ ☆ ☆ ☆ ☆ ☆

7. 2分音ぶ + 4分音ぶ

☆ ☆ ☆ ☆ ☆ ☆ ☆ ☆

8. 付点2分音ぶ

☆ ☆ ☆ ☆ ☆ ☆ ☆ ☆

楽ふのおはなし

☆ ☆ ☆ ☆ ☆ ☆ ☆ ☆

付点2分音符
(ふてんにぶんおんぷ)
(ふてんにぶんおんぷ)

9. 付点2分音ぶの練習

T.M.

Trumpet in B \flat

Alto Horn in E \flat

Trombone
Euphonium

E \flat Tuba
B \flat Tuba

Snare Drum

Sus. Cymbal
Bass Drum

Mallets

B \flat Trp.

E \flat A.Hrn.

Trb.
Euph.

E \flat Tuba
B \flat Tuba

S.D.

S.Cym.
B.D.

Mal.

10. 11番とくらべてみよう

T.M.

The image displays a musical score for the percussion section of a piece titled "The Rose Tree". The score is written for a 4/4 time signature and consists of seven staves. The first four staves are for brass instruments: Trumpet in B♭, Alto Horn in E♭, Trombone Euphonium, and E♭ Tuba/B♭ Tuba. The last three staves are for percussion: Snare Drum, Sus. Cymbal Bass Drum, and Mallets. The brass instruments play a simple harmonic pattern, with the Trumpet and Alto Horn playing half notes and the Trombone Euphonium and E♭ Tuba/B♭ Tuba playing whole notes. The Snare Drum plays a rhythmic pattern of eighth notes, with the notation "R L R L R L R L R L R L R L R L" written below the staff. The Sus. Cymbal Bass Drum plays a simple harmonic pattern, with the notation "R L R L R L R L R L R L R L R L" written below the staff. The Mallets play a simple harmonic pattern, with the notation "R L R L R L R L R L R L R L R L" written below the staff.

11. 10番とくらべてみよう

The percussion score consists of six staves. The first four staves are for melodic instruments: Trumpet in B \flat , Alto Horn in E \flat , Trombone Euphonium, and E \flat Tuba/B \flat Tuba. The last two staves are for percussion: Snare Drum and a combination of Suspended Cymbal and Bass Drum. The Mallets staff is also present, playing a melodic line. The Snare Drum part includes a rhythmic notation 'L R L R L R' under the first six measures, indicating a specific drumming pattern. The time signature is 2/4, and the key signature has one flat (B \flat).

12. 「できるかな？」

T.M.

The musical score for the percussion section of 'The Rose Tree' is written for six parts: Trumpet in B \flat , Alto Horn in E \flat , Trombone Euphonium, E \flat Tuba/B \flat Tuba, Snare Drum, and Mallets. The key signature is one flat (B \flat) and the time signature is 4/4. The score consists of four measures. The brass instruments (Trumpet, Alto Horn, Trombone Euphonium, and E \flat Tuba/B \flat Tuba) play a melody of quarter and half notes, with the first measure starting on a whole rest. The Snare Drum part features a rhythmic pattern of eighth and sixteenth notes, with specific strokes indicated by letters (R for right, L for left) below the staff. The Suspended Cymbal and Bass Drum play a simple pattern of half notes, with the first measure starting on a whole rest. The Mallets play a melody of quarter and half notes, with the first measure starting on a whole rest.

金管バンド用スコア／ステップ4-6

B \flat Trp.

E \flat A.Hrn.

Trb.
Euph.

E \flat Tuba
B \flat Tuba

S.D.
L L L L L R L R L L R L R L R L L L L L R L R L L

S.Cym.
B.D.

Mal.

13. 「できたらすごい！」

T.M.

Trumpet in B \flat

Alto Horn in E \flat

Trombone
Euphonium

E \flat Tuba
B \flat Tuba

Snare Drum
R R L R L R L R L R L R L R L R L R L R L R L L L L

Sus. Cymbal
Bass Drum

Mallets

B \flat Trp.

E \flat A.Hrn.

Trb.
Euph.

E \flat Tuba
B \flat Tuba

S.D.
L R L R L R L R L R L R L R L R L L R L R

S.Cym.
B.D.

Mal.